



SCALE 1:1000



COPYRIGHT

These drawings, plans and specifications and the copyright therein are the property of the Bonacci Group and must not be used, reproduced or copied wholly or in part without the written permission of the Bonacci Group.

PS	ISSUED FOR DEVELOPMENT APPLICATION	21.01.19	PA	-
P4	ISSUED FOR DEVELOPMENT APPLICATION	21.01.19	PA	-
P3	ISSUED FOR PRE-DA	22.11.18	PA	-
P2	ISSUED FOR PRE-DA	16.11.18	PA	-
P1	PRELIMINARY ISSUE	31.05.17	WW	-

P12	ISSUED FOR DEVELOPMENT APPLICATION	21.01.20	HW	-
P11	ISSUED FOR DEVELOPMENT APPLICATION	22.01.20	JF	-
P10	ISSUED FOR DEVELOPMENT APPLICATION	17.01.20	JF	-
P9	ISSUED FOR DEVELOPMENT APPLICATION	05.12.19	JF	-
P8	ISSUED FOR DEVELOPMENT APPLICATION	03.12.19	SK	-
P7	ISSUED FOR DEVELOPMENT APPLICATION	29.11.19	JF	-
P6	ISSUED FOR DEVELOPMENT APPLICATION	19.02.19	SK	-

P17	ISSUED FOR DA SUBMISSION	27.08.20	HW	-
P16	ISSUED FOR DA SUBMISSION	24.08.20	HW	-



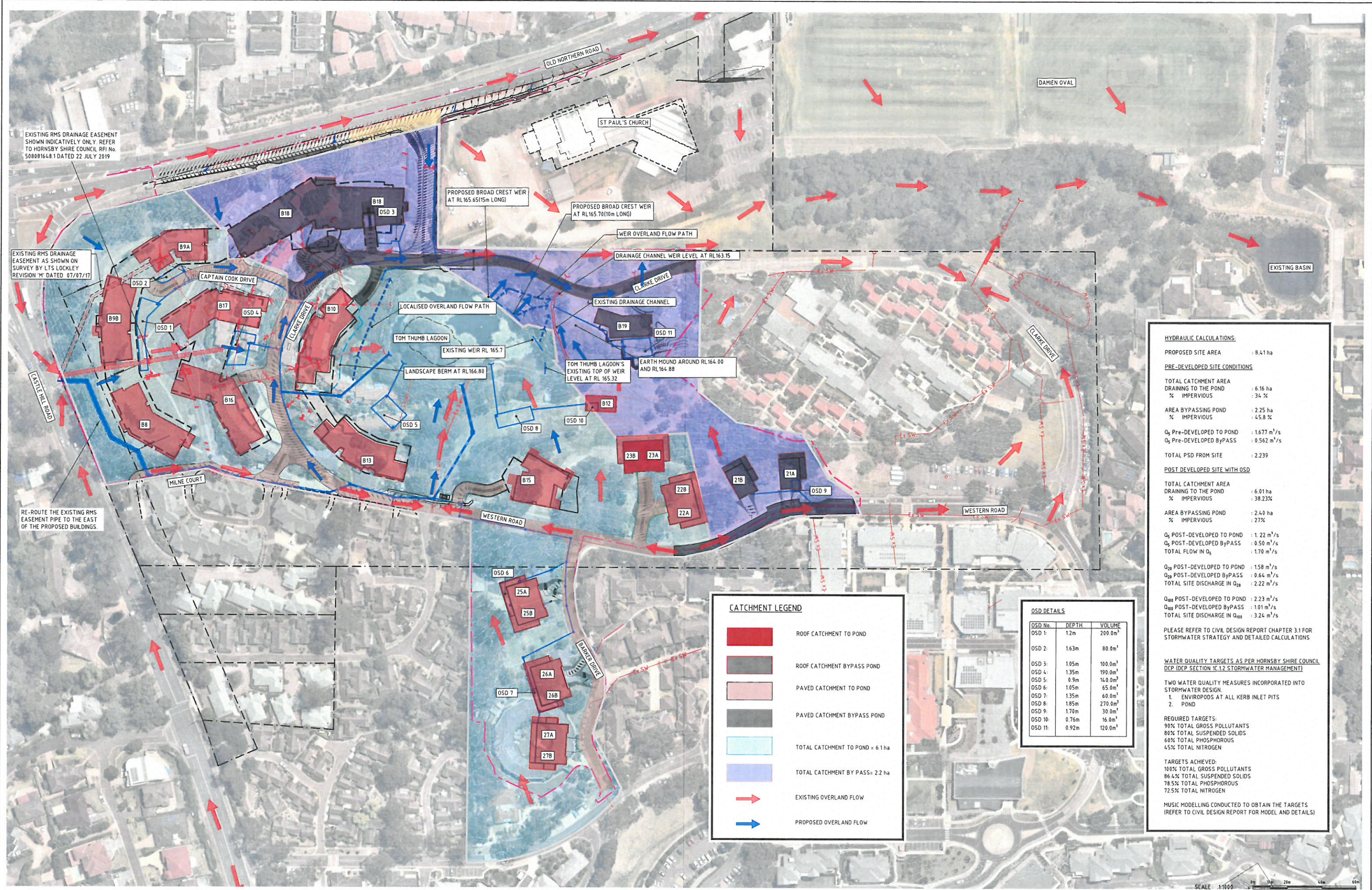
BONACCI

Bonacci Group Pty Ltd
ABN 42 080 332 345
Consulting Engineers, Structural - Civil - Infrastructure
Suite 14, Level 1, 168 Melbourne St, North Adelaide, SA 5006
Tel: +61 8 8267 1400 Fax: +61 8 8267 1401
adelaide@bonaccigroup.com
www.bonaccigroup.com

Project Name
KILVINTON & DOROTHY MOWLL COURT RENEWAL, KILVINTON VILLAGE 417 OLD NORTHERN ROAD, CASTLE HILL

Drawing Title
GENERAL ARRANGMENT PLAN

DEVELOPMENT APPLICATION			
Designed	SK	Approved	Date
Drawn	JF		
Scale	1:1000	Project Ref	Drawing No
Date	MAY 2017		Rev
Sheet	A1	20 21920 01	C030 P17



HYDRAULIC CALCULATIONS:	
PROPOSED SITE AREA	: 8.41 ha
PRE-DEVELOPED SITE CONDITIONS	
TOTAL CATCHMENT AREA DRAINING TO THE POND	: 6.16 ha
% IMPERVIOUS	: 34 %
AREA BYPASSING POND	: 2.25 ha
% IMPERVIOUS	: 45.8 %
Q _s Pre-DEVELOPED TO POND	: 1.677 m ³ /s
Q _s Pre-DEVELOPED ByPASS	: 0.562 m ³ /s
TOTAL PSD FROM SITE	: 2.239
POST DEVELOPED SITE WITH OSD	
TOTAL CATCHMENT AREA DRAINING TO THE POND	: 6.01 ha
% IMPERVIOUS	: 38.23%
AREA BYPASSING POND	: 2.40 ha
% IMPERVIOUS	: 27%
Q _s POST-DEVELOPED TO POND	: 1.22 m ³ /s
Q _s POST-DEVELOPED ByPASS	: 0.50 m ³ /s
TOTAL FLOW IN Q _s	: 1.70 m ³ /s
Q ₂₅ POST-DEVELOPED TO POND	: 1.58 m ³ /s
Q ₂₅ POST-DEVELOPED ByPASS	: 0.64 m ³ /s
TOTAL SITE DISCHARGE IN Q ₂₅	: 2.22 m ³ /s
Q ₁₀₀ POST-DEVELOPED TO POND	: 2.23 m ³ /s
Q ₁₀₀ POST-DEVELOPED ByPASS	: 1.01 m ³ /s
TOTAL SITE DISCHARGE IN Q ₁₀₀	: 3.24 m ³ /s
PLEASE REFER TO CIVIL DESIGN REPORT CHAPTER 3.1 FOR STORMWATER STRATEGY AND DETAILED CALCULATIONS	
WATER QUALITY TARGETS AS PER HORNSBY SHIRE COUNCIL DCP (DCP SECTION 10.1.2 STORMWATER MANAGEMENT)	
TWO WATER QUALITY MEASURES INCORPORATED INTO STORMWATER DESIGN:	
1. ENVIROPODS AT ALL KERB INLET PITS	
2. POND	
REQUIRED TARGETS:	
90% TOTAL GROSS POLLUTANTS	
80% TOTAL SUSPENDED SOLIDS	
60% TOTAL PHOSPHOROUS	
45% TOTAL NITROGEN	
TARGETS ACHIEVED:	
100% TOTAL GROSS POLLUTANTS	
86.4% TOTAL SUSPENDED SOLIDS	
78.5% TOTAL PHOSPHOROUS	
72.5% TOTAL NITROGEN	
MUSIC MODELLING CONDUCTED TO OBTAIN THE TARGETS (REFER TO CIVIL DESIGN REPORT FOR MODEL AND DETAILS)	

CATCHMENT LEGEND	
	ROOF CATCHMENT TO POND
	ROOF CATCHMENT BYPASS POND
	PAVED CATCHMENT TO POND
	PAVED CATCHMENT BYPASS POND
	TOTAL CATCHMENT TO POND = 6.1 ha
	TOTAL CATCHMENT BY PASS= 2.2 ha
	EXISTING OVERLAND FLOW
	PROPOSED OVERLAND FLOW

OSD DETAILS		
OSD No.	DEPTH	VOLUME
OSD 1:	1.2m	200.0m ³
OSD 2:	1.63m	80.0m ³
OSD 3:	1.05m	100.0m ³
OSD 4:	1.35m	190.0m ³
OSD 5:	0.9m	140.0m ³
OSD 6:	1.05m	65.0m ³
OSD 7:	1.35m	60.0m ³
OSD 8:	1.85m	270.0m ³
OSD 9:	1.70m	30.0m ³
OSD 10:	0.76m	16.0m ³
OSD 11:	0.92m	120.0m ³

COPYRIGHT: All rights reserved. These drawings, plans and specifications are the property of the Bonacci Group and must not be used, reproduced or copied wholly or in part without the written permission of the Bonacci Group.			
Rev	Description	Date	By App
P5	ISSUED FOR DEVELOPMENT APPLICATION	17.01.20	JF -
P4	ISSUED FOR DEVELOPMENT APPLICATION	05.07.19	SK -
P3	ISSUED FOR DEVELOPMENT APPLICATION	29.11.19	JF -
P2	ISSUED FOR DEVELOPMENT APPLICATION	31.01.19	PA -
P1	PRELIMINARY ISSUE	31.05.17	WW -
P10	ISSUED FOR DA SUBMISSION	27.08.20	HW -
P9	ISSUED FOR DA SUBMISSION	24.08.20	HW -

Anglicare

BONACCI

Bonacci Group Pty Ltd
ABN 42 060 332 345
Consulting Engineers, Structural - Civil - Infrastructure
Suite 14, Level 1, 168 Melbourne St, North Adelaide, SA 5006
Tel: +61 8 8267 1400 Fax: +61 8 8267 1401
adelaide@bonaccigroup.com
www.bonaccigroup.com

Project Name: ANGLICAN CARE RESIDENTIAL VILLAGE WESTERN ROAD, CASTLE HILL

Drawing Title: PROPOSED STORMWATER CATCHMENT PLAN

DEVELOPMENT APPLICATION

Designed	SK	Approved	Date	North
Drawn	PA			
Scale	1:1000			
Date	MAY 2017	Project Ref	Drawing No	Rev
Sheet	A1	20 21920 01	C055	P10

WARNING
BEWARE OF UNDERGROUND SERVICES
THE LOCATIONS OF UNDERGROUND SERVICES SHOWN ARE APPROXIMATE ONLY AND THEIR EXACT POSITION SHOULD BE PROVEN ON SITE.

WARNING
NO DRAINAGE WORKS SHALL COMMENCE UNTIL THE CONTRACTOR CONFIRMS THE I.L. OF ALL EXISTING DRAINS, AND CONFIRMS IN WRITING WITH THE ENGINEERING SUPERVISOR.

SHORING WALL SHOWN INDICATIVELY ONLY. REFER TO STRUCTURAL DRAWINGS FOR DETAILS. SHORING TO UNDERSIDE LEVEL 1 AT RL 167.70

SHORING WALL SHOWN INDICATIVELY ONLY. REFER TO STRUCTURAL DRAWINGS FOR DETAILS. SHORING TO UNDERSIDE LEVEL 1 AT RL 167.70

SHORING WALL SHOWN INDICATIVELY ONLY. REFER TO STRUCTURAL DRAWINGS FOR DETAILS

SHORING WALL SHOWN INDICATIVELY ONLY. REFER TO STRUCTURAL DRAWINGS FOR DETAILS

EXISTING RMS DRAINAGE EASEMENT PROVIDED BY HORNSBY SHIRE COUNCIL ON RFI No. 508081648.1 DATED 22 JULY 2019 SHOWN AS PD 654242

ALL EXISTING PROPERTY SERVICES' LOCATIONS AND DEPTHS ARE APPROXIMATE AND MUST BE VERIFIED ON SITE. THE CONTRACTOR SHOULD SUPPLY PRECISE LOCATIONS AND DEPTHS TO THE ENGINEER FOR REVIEW PRIOR TO ANY WORKS THAT MAY AFFECT THESE SERVICES.

Rev	Description	Date	By	App
P5	ISSUED FOR DEVELOPMENT APPLICATION	29.11.19	JF	-
P4	ISSUED FOR DEVELOPMENT APPLICATION	13.02.19	JF	-
P3	ISSUED FOR DEVELOPMENT APPLICATION	31.01.19	PA	-
P2	ISSUED FOR DEVELOPMENT APPLICATION	21.12.18	JF	-
P1	PRELIMINARY ISSUE	14.12.18	JF	-

Rev	Description	Date	By	App
P6	ISSUED FOR DEVELOPMENT APPLICATION	17.01.20	JF	-
P5	ISSUED FOR DA SUBMISSION	24.08.20	HM	-
P4	ISSUED FOR DA SUBMISSION	27.08.20	HM	-
P3	ISSUED FOR DEVELOPMENT APPLICATION	13.02.19	JF	-

PRINTING FILE REQUIREMENTS
DESIGN PDF FILES GENERATED FROM THIS DIGITAL FILE HAVE BEEN CONFIGURED FOR PRINTING IN COLOUR ONLY. IT IS THE RESPONSIBILITY OF THE END USER TO HAVE PLANS PRINTED IN COLOUR FORMAT SO THAT THE DESIGN INFORMATION CAN BE INTERPRETED CORRECTLY.



BONACCI
Bonacci Group (NSW) Pty Ltd
ABN 29 102 716 352
Consulting Engineers, Structural - Civil - Infrastructure
Level 6, 37 York Street, Sydney, NSW 2000 Australia
Tel: +61 2 8247 8400 Fax: +61 2 8247 8444
sydney@bonaccigroup.com
www.bonaccigroup.com

Project Name
**KILVINTON & DOROTHY MOWLL
COURT RENEWAL, KILVINTON VILLAGE
417 OLD NORTHERN ROAD, CASTLE HILL**

Drawing Title
**BULK EARTHWORKS PLAN
SHEET 1**

DEVELOPMENT APPLICATION			
Designed	JF	Approved	Date
Drawn	JF		
Scale	1:500	Project Ref	Drawing No
Date	DEC 2018		
Sheet	A1	20 21920 01	C010 P16

CUT FILL DEPTH RANGE			Colour
Lower_value	Upper_value		
-7.0	to	-5.0	2
-5.0	to	-4.5	2
-4.5	to	-4.0	2
-4.0	to	-3.5	2
-3.5	to	-3.0	2
-3.0	to	-2.5	2
-2.5	to	-2.0	2
-2.0	to	-1.5	2
-1.5	to	-1.0	2
-1.0	to	-0.5	2
-0.5	to	0	2
0	to	0.5	2
0.5	to	1.0	2
1.0	to	1.5	2
1.5	to	2.0	2
2.0	to	2.5	2
2.5	to	3.0	2
3.0	to	3.5	2
3.5	to	4.0	2
4.0	to	4.5	2
4.5	to	5.0	2
5.0	to	50000	2

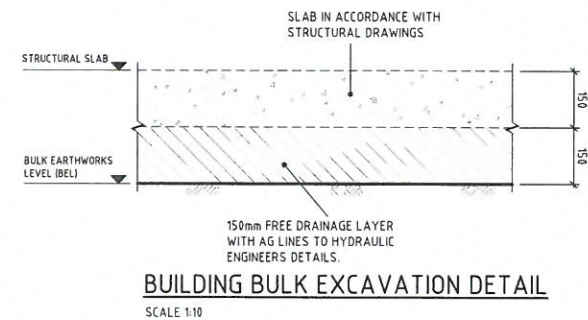
LEGEND			
Ex SW	EXISTING STORMWATER DRAINAGE LINE	BEL 48.72	FINISHED BULK EXCAVATION LEVEL
Ex S	EXISTING SEWER LINE	48.50	BULK EARTHWORKS CONTOURS
Ex W	EXISTING WATER MAIN		SITE BOUNDARY
Ex G	EXISTING GAS LINE		EXTENT OF DEVELOPMENT APPLICATION / SITE BOUNDARY FENCE
Ex T	EXISTING TELECOMMUNICATIONS LINE		EX SURFACE LEVEL
Ex E	EXISTING ELECTRICAL LINE		EX SURFACE CONTOUR
	EXISTING UNKNOWN SERVICE		
	TITLE LIMITED IN STRATUM (DEPTH AS SHOWN)		
	EXISTING RMS DRAINAGE EASEMENT SHOWN INDICATIVELY ONLY. REFER TO HORNSBY SHIRE COUNCIL RFI No. 508081648.1 DATED 22 JULY 2019		
		TP2	EXISTING TREE TO BE RETAINED
			EXISTING TREE TO BE REMOVED

EXCAVATION NOTES

- E1 VOLUMES ARE APPROXIMATE ONLY AND DO NOT INCORPORATE BULKING FACTORS AND OVER EXCAVATION VOLUMES HAVE BEEN CALCULATED BETWEEN EXISTING SURFACE LEVELS AND BULK EARTHWORKS LEVELS. GROUND WATER SEEPAGE MAY OCCUR IN EXCAVATED AREAS. DE-WATERING MAY BE REQUIRED IN THIS INSTANCE.
- E2 THIS DRAWING ONLY DETAILS EXCAVATION ASSOCIATED WITH THE BUILDING SLAB (IGNORING STRUCTURAL FOOTINGS, BEAMS AND COLUMNS).
- E3 PROVIDE TEMPORARY MAXIMUM 1 IN 1 BATTERS U.N.O. GEOTECH TO CONFIRM BATTER ACCEPTABILITY DURING CONSTRUCTION.
- E4 APPROVED EXCAVATED SITE TOPSOIL (48,455m³ APPROX.) IS TO BE TEMPORARILY STOCKPILED WITHIN APPROVED LANDSCAPE ZONES (TO BE CONFIRMED ON SITE) AND RE-USED AS LANDSCAPING TOPSOIL IN ACCORDANCE WITH THE LANDSCAPE ARCHITECTS SPECIFICATIONS. WHERE NECESSARY, AND AS INDICATED BY SOIL TESTING, STOCKPILED TOPSOIL WILL BE AMELIORATED FOR THAT PURPOSE.
- E5 APPROVED EXCAVATED MATERIAL IS TO BE TEMPORARILY STOCKPILED WITHIN APPROVED LANDSCAPE ZONES (TO BE CONFIRMED ON SITE) AND RE-USED AS BACKFILL IN ACCORDANCE WITH THE ENGINEERS SPECIFICATIONS.
- E6 REFER TO ARBORIST REPORT FOR TREE PROTECTION MEASURES IF REQUIRED.
- E7 500mm ZONE OFFSET FROM BUILDING HAS BEEN ALLOWED FOR FORM WORK.
- E8 SITE SURVEY SUPPLIED BY L.T.S. LOCKLEY PTY LTD PROJECT: 33040, REF: 338800T, REV Q, DATED 13.06.18.
- E9 THIS DRAWING DOES NOT DETAIL EXTENT OF WORKS TO ACHIEVE FINISHED GROUND LEVELS IN ACCORDANCE WITH DETAILED LANDSCAPE AND ARCHITECTURAL PLANS.

BULK EARTHWORKS QUANTITIES SUMMARY			
AREA	CUT (m ³)	FILL (m ³)	EXCESS (m ³)
BUILDING EARTHWORKS	74,587	378	74,211
ROAD EARTHWORKS	8,676	528	8,148
EXTERNAL LANDSCAPE/BACKFILL	45,589	16,542	29,047
TOTAL (IN-PLACE)	128,852	17,446	111,406

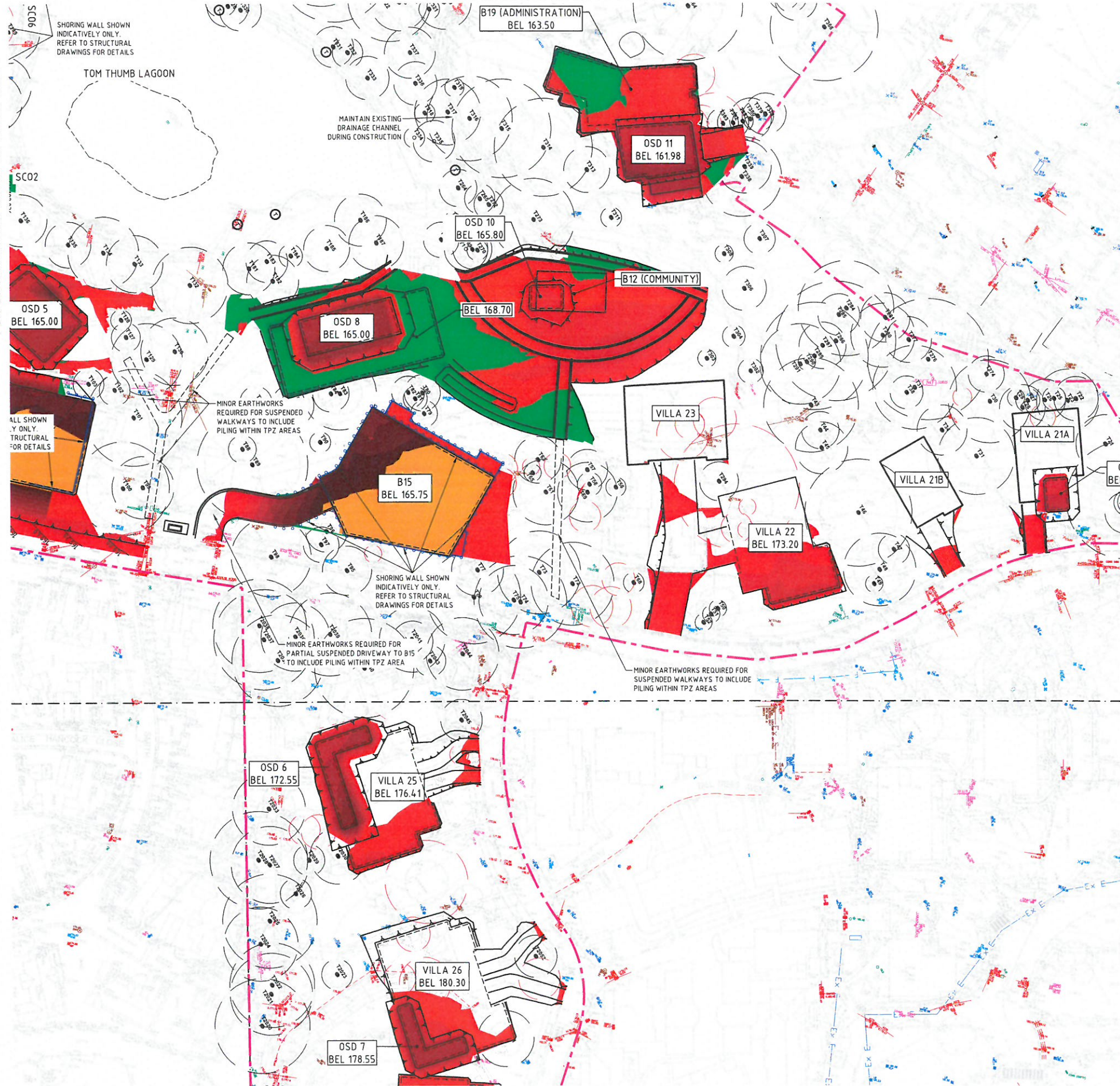
- NOTES
1. BULK EARTHWORKS FOR BUILDINGS ARE 300mm BELOW BASEMENT FLOOR LEVELS - SEE BULK EXCAVATION DETAIL BELOW
 2. FOR ROADWORK DEPTHS REFER TO PAVEMENT DETAILS ON SHEET C070
 3. 885m³ CUT FOR WORKS TO OLD NORTHERN ROAD WIDENING INCLUDED IN ROAD EARTHWORKS QUANTITIES.
 4. RE-USED EXCAVATED MATERIAL FOR LANDSCAPED FILL AREAS BETWEEN BUILDINGS B8, B9, B10, B13, B16, B17 & B18 NOT SHOWN FOR CLARITY
 5. APPROVED EXCESS EXCAVATED TOPSOIL MAY BE DISTRIBUTED TO LANDSCAPED AREAS THROUGHOUT THE SITE WHERE APPROVED BY THE LANDSCAPE ARCHITECT AND OR ARBORIST - SEE EXCAVATION NOTES E5 AND E6.



THIS DRAWING MAY BE PREPARED IN COLOUR AND MAY BE INCOMPLETE IF COPIED

FOR CONTINUATION REFER TO SHEET C010

FOR CONTINUATION REFER TO SHEET C012



CUT FILL DEPTH RANGE			Colour
Lower_value	Upper_value		
-7.0	to -5.0	2	Orange
-5.0	to -4.5	2	
-4.5	to -4.0	2	Dark Orange
-4.0	to -3.5	2	
-3.5	to -3.0	2	Red-Orange
-3.0	to -2.5	2	
-2.5	to -2.0	2	Red
-2.0	to -1.5	2	
-1.5	to -1.0	2	Dark Red
-1.0	to -0.5	2	
-0.5	to 0	2	Red
0	to 0.5	2	
0.5	to 1.0	2	Green
1.0	to 1.5	2	
1.5	to 2.0	2	Dark Green
2.0	to 2.5	2	
2.5	to 3.0	2	Dark Green
3.0	to 3.5	2	
3.5	to 4.0	2	Dark Green
4.0	to 4.5	2	
4.5	to 5.0	2	Dark Green
5.0	to 50000	2	

LEGEND		
Ex SW	EXISTING STORMWATER DRAINAGE LINE	BEL 48.72
Ex S	EXISTING SEWER LINE	48.50
Ex W	EXISTING WATER MAIN	
Ex G	EXISTING GAS LINE	
Ex T	EXISTING TELECOMMUNICATIONS LINE	
Ex E	EXISTING ELECTRICAL LINE	
	EXISTING UNKNOWN SERVICE	
	TITLE LIMITED IN STRATUM (DEPTH AS SHOWN)	
	EXISTING RMS DRAINAGE EASEMENT SHOWN INDICATIVELY ONLY. REFER TO HORNSBY SHIRE COUNCIL RFI No. 508081648.1 DATED 22 JULY 2019	
	EXISTING TREE TO BE RETAINED	
	EXISTING TREE TO BE REMOVED	

EXCAVATION NOTES

- E1 VOLUMES ARE APPROXIMATE ONLY AND DO NOT INCORPORATE BULKING FACTORS AND OVER EXCAVATION VOLUMES HAVE BEEN CALCULATED BETWEEN EXISTING SURFACE LEVELS AND BULK EARTHWORKS LEVELS. GROUND WATER SEEPAGE MAY OCCUR IN EXCAVATED AREAS. DE-WATERING MAY BE REQUIRED IN THIS INSTANCE.
- E2 THIS DRAWING ONLY DETAILS EXCAVATION ASSOCIATED WITH THE BUILDING SLAB (IGNORING STRUCTURAL FOOTINGS, BEAMS AND COLUMNS).
- E3 PROVIDE TEMPORARY MAXIMUM 1 IN 1 BATTERS UNO. GEOTECH TO CONFIRM BATTER ACCEPTABILITY DURING CONSTRUCTION.
- E4 APPROVED EXCAVATED SITE TOPSOIL (48,455m³ APPROX.) IS TO BE TEMPORARILY STOCKPILED WITHIN APPROVED LANDSCAPE ZONES (TO BE CONFIRMED ON SITE) AND RE-USED AS LANDSCAPING TOPSOIL IN ACCORDANCE WITH THE LANDSCAPE ARCHITECT'S SPECIFICATIONS. WHERE NECESSARY, AND AS INDICATED BY SOIL TESTING, STOCKPILED TOPSOIL WILL BE AMELIORATED FOR THAT PURPOSE.
- E5 APPROVED EXCAVATED MATERIAL IS TO BE TEMPORARILY STOCKPILED WITHIN APPROVED LANDSCAPE ZONES (TO BE CONFIRMED ON SITE) AND RE-USED AS BACKFILL IN ACCORDANCE WITH THE ENGINEERS SPECIFICATIONS.
- E6 REFER TO ARBORIST REPORT FOR TREE PROTECTION MEASURES IF REQUIRED.
- E7 500mm ZONE OFFSET FROM BUILDING HAS BEEN ALLOWED FOR FORM WORK.
- E8 SITE SURVEY SUPPLIED BY LITS LOCKLEY PTY LTD PROJECT: 33040, REF: 3388010T, REV Q, DATED 13.06.18.
- E9 THIS DRAWING DOES NOT DETAIL EXTENT OF WORKS TO ACHIEVE FINISHED GROUND LEVELS IN ACCORDANCE WITH DETAILED LANDSCAPE AND ARCHITECTURAL PLANS.

BULK EARTHWORKS QUANTITIES SUMMARY			
AREA	CUT (m ³)	FILL (m ³)	EXCESS (m ³)
BUILDING EARTHWORKS	74,587	376	74,211
ROAD EARTHWORKS	8,676	528	8,148
EXTERNAL LANDSCAPE/BACKFILL	45,589	16,542	29,047
TOTAL (IN-PLACE)	128,852	17,446	111,406

- NOTES
- BULK EARTHWORKS FOR BUILDINGS ARE 300mm BELOW BASEMENT FLOOR LEVELS - SEE BULK EXCAVATION DETAIL BELOW
 - FOR ROADWORK DEPTHS REFER TO PAVEMENT DETAILS ON SHEET C070
 - 885m³ CUT FOR WORKS TO OLD NORTHERN ROAD WIDENING INCLUDED IN ROAD EARTHWORKS QUANTITIES.
 - RE-USED EXCAVATED MATERIAL FOR LANDSCAPED FILL AREAS BETWEEN BUILDINGS B8, B9, B10, B13, B16, B17 & B18 NOT SHOWN FOR CLARITY
 - APPROVED EXCESS EXCAVATED TOPSOIL MAY BE DISTRIBUTED TO LANDSCAPED AREAS THROUGHOUT THE SITE WHERE APPROVED BY THE LANDSCAPE ARCHITECT AND OR ARBORIST - SEE EXCAVATION NOTES E5 AND E6.

WARNING
BEWARE OF UNDERGROUND SERVICES
THE LOCATIONS OF UNDERGROUND SERVICES SHOWN ARE APPROXIMATE ONLY AND THEIR EXACT POSITION SHOULD BE PROVEN ON SITE.

WARNING
NO DRAINAGE WORKS SHALL COMMENCE UNTIL THE CONTRACTOR CONFIRMS THE I.L. OF ALL EXISTING DRAINS, AND CONFIRMS IN WRITING WITH THE ENGINEERING SUPERVISOR.

ALL EXISTING PROPERTY SERVICES' LOCATIONS AND DEPTHS ARE APPROXIMATE AND MUST BE VERIFIED ON SITE. THE CONTRACTOR SHOULD SUPPLY PRECISE LOCATIONS AND DEPTHS TO THE ENGINEER FOR REVIEW PRIOR TO ANY WORKS THAT MAY AFFECT THESE SERVICES.



THIS DRAWING MAY BE PREPARED IN COLOUR AND MAY BE INCOMPLETE IF COPIED

COPYRIGHT			
All rights reserved. These drawings, plans and specifications and the copyright therein are the property of the Bonaccci Group and must not be used, reproduced or copied wholly or in part without the written permission of the Bonaccci Group.			
PS	ISSUED FOR DA SUBMISSION	27.08.20	HM
PL	ISSUED FOR DA SUBMISSION	24.08.20	HM
PI	DRAFT DA UPDATES	21.05.20	JF
Rev	Description	Date	By App

PRINTING FILE REQUIREMENTS			
DESIGN PDF FILES GENERATED FROM THIS DIGITAL FILE HAVE BEEN CONFIGURED FOR PRINTING IN COLOUR ONLY. IT IS THE RESPONSIBILITY OF THE END USER TO HAVE PLANS PRINTED IN COLOUR FORMAT SO THAT THE DESIGN INFORMATION CAN BE INTERPRETED CORRECTLY			
Rev	Description	Date	By App



Project Name	KILVINTON & DOROTHY MOWLL COURT RENOVAL, KILVINTON VILLAGE 417 OLD NORTHERN ROAD, CASTLE HILL		
Drawing Title	BULK EARTHWORKS PLAN SHEET 2		

DEVELOPMENT APPLICATION			
Designed	JF	Approved	
Drawn	JF	Date	
Scale	1:500	Project Ref	20 21920 01
Date	MAY 2020	Drawing No	C011
Sheet	A1	Rev	P5

